

WARNING SIGNS for Hereditary Breast Cancer

You should be referred to us if you:

- Were diagnosed with cancer before 50 years of age
- Were diagnosed with multiple primary tumours
- Have bilateral disease (cancer in both breasts)
- Have a family history of cancer
- Have a personal or family history of male breast cancer
- Have triple negative tumour histology
- Are from a high-risk population group



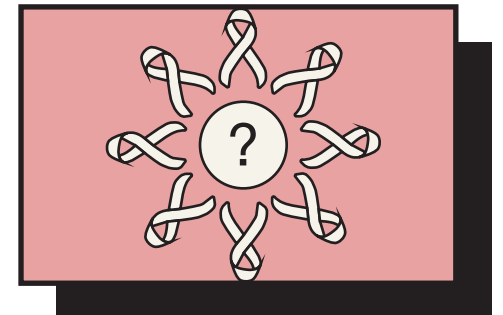
Please share this information with your doctor or genetic counsellor:



How the affected person is related to you



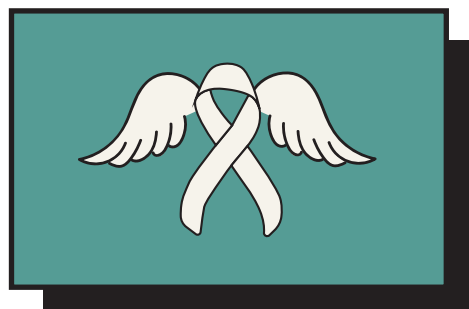
Their age at diagnosis



The type of cancer diagnosis



Histology reports or genetic testing information from any affected relatives



Whether your relatives with cancer have passed away

